

**Report on the content of the Museum Ludwig
archives concerning the painting
Still Life with Coffee Pot (1906?)
by Mikhail Larionov**

Author of the report: Verena Franken
Report editors: Jilleen Nadolny and Petra Mandt
Location and date of the report: Museum Ludwig, Cologne, February 2017

1. Provenance

There are a few notes on the painting's provenance which are listed in the archive of the Museum Ludwig (comp. table 1). There is no information if the painting was inherited by Alexandra Tomilina-Larionova, Mikhail's widow, on Mikhail Larionov's death in 1964.

It is documented that *Still Life with Coffee Pot* was part of collection by Gallery Schwarz in Milan. It is possible that it was bought after the exhibition "Larionov – Gontcharova" (15.2.-28.2.1961) organised by this gallery.

There is no information listed when the painting was acquired by the Gallery Gmurzynska which was located in Cologne that time¹. The painting *Still Life with Coffee Pot* was part of the gallery's collection until 1990. The painting was acquired by Peter and Irene Ludwig (Ludwig collection in Aachen) in 1990. In the archive of the Museum Ludwig there is an invoice (dated 11.1.1990) and a delivery note verifying the acquisition. In December 2011 it was donated as artistic legacy to the Museum Ludwig in Cologne after Irene Ludwig's death in 2010 (28th November 2010).

table 1: listing of the painting's provenance.

undated	Milan, Gallery Schwarz (Galleria Schwarz)
until 1990	Cologne, Gallery Gmurzynska (Galerie Gmurzynska)
since 1990	Aachen, collection Ludwig (collection of Peter and Irene Ludwig) 1990-2011: loan to the Museum Ludwig in Cologne
since 20.12.2011	Donation/ artistic legacy to the Museum Ludwig, Cologne

References in general for the painting's exhibition history and bibliography see:

<https://www.kulturelles-erbe-koeln.de/documents/obj/05021028>

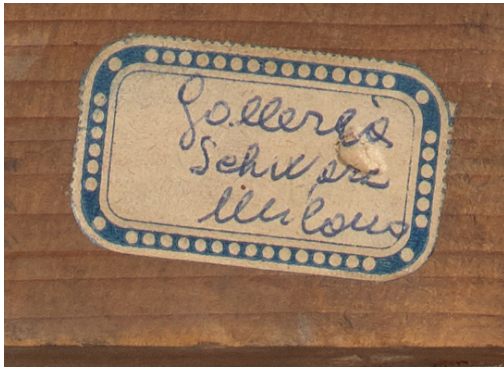
¹ Founded in 1965 in Cologne, Germany Gallery Gmurzynska is now located in Switzerland.



Plate 1. Mikhail Larionov, Still Life with Coffee Pot, c. 1906, collection Museum Ludwig: Inv. Nr. ML 1486. Verso, visible light.

Rheinisches Bildarchiv Köln, Patrick Schwarz, rba_d050877_02, www.kulturelles-erbe-koeln.de/documents/obj/05021028

The reverse of the canvas shows a sketch of a nude and the inscription LARIONOV, both probably done by the artist.



The label refers to the painting's former owner Galleria Schwarz, Milan.

Larionov – Gontcharova [exhibition catalogue, 15 February to 28 February 1961, Galleria Schwarz, Milan], Apollinaire, G. and Seuphor, M. (ed.?) Milan: Gaiani (1961), unpagged.



Fragments of an adhesive paper label with printed text, contains Italian text: 'Au[tore], Titolo, Dime[nsione], Tecnic[a], Prezzo'. Exhibition?

2. Art historical information, a few notes

There are different notes on the dating of the painting *Still Life with Coffee Pot*. The exhibition catalogue “Larionov – Gontcharova” (Galleria Schwarz, Mailand) in 1961 listed the painting with the date 1906.² Based on this information, the painting was enclosed in the in the exhibition catalogue “Von Malewitsch bis Kabakov: Russische Avantgarde im 20. Jahrhundert. Die Sammlung Ludwig. (Weiss 1993, 144)³. She pointed out that M. Larionov might have created the painting after his trip to Paris in 1906 being one of his last impressionist paintings.

But the conclusion “..it suggests that Larionov still found inspiration in the imaginary of his neo-primitive period. It has none of the immediacy and power of the early works ...”given by A. Parton for *Still Life* (ML 1487) (Parton 1993: xvi and 200-203)⁴, also works for *Still life*

² *Larionov – Gontcharova* [exhibition catalogue, 15 February to 28 February 1961, Galleria Schwarz, Milan], Apollinaire, G. and Seuphor, M. (ed.?) Milan: Gaiani (1961).

³ *Von Malewitsch bis Kabakov: Russische Avantgarde im 20. Jahrhundert. Die Sammlung Ludwig* [exhibition catalogue, 16 October 1993 to 2 January 1994, Josef-Haubrich- Kunsthalle], Weiss, E. (ed.), Munich: Prestel (1993), p. 144.

⁴ Parton, A. *Mikhail Larionov and the Russian Avant-Garde*. Princeton: Princeton University Press (1993), pp. xvi, 203.

with Coffee Pot. The painting indeed shows many similarities regarding style, colouring and format with *Still life* (ML 1487) and regarding similar motifs with No.909: *Still Life with Branches and drawings* (Inv.No. Ж 2032.).⁵

His shift to earlier styles give large windows for dating individual paintings.

⁵ State Tretyakov Gallery, Catalogue of the collection, Painting of the first Half of the 20 th Century. Volume 6 Book two, Letters K,L. Moscow 2017. No.909: Still Life with Branches and drawings Inv.No. Ж 2032, page 281/282.